

Pool Project *Planning Guide*



Pebble 
Technology®
INTERNATIONAL

*The World's Most Trusted
Pool Finishes®*

Congratulations!

You're getting ready to begin a pool project! With a PebbleTec® pool finish, you're already on your way to creating an oasis of natural beauty that will last for years. The perfect place for making lifelong memories.

Not sure how to begin?...follow these 6 steps

There are 6 Phases to every pool project. With some early planning, the process can go very smoothly. The key is great preparation; and the below project planning guide can help.

1. Assess Your Current Situation

- Why are you starting a pool scape project?
- How do you currently use your pool/backyard space — and how would you like to use it in the future? (Who will use it? How often and for which activities?)
- If you have an existing pool, do you have any functional issues like: Leaking, cracks, mottling, mildew/algae, hollow pool walls, loose pebbles or tiles?

2. Define Your Vision

- Are you envisioning a full backyard transformation or a simple pool finish refresh?
- To explore ideas, refer to Pinterest, backyard design magazines, Houzz or our “World’s Greatest Pools” and inspiration photo galleries at [Pebbletec.com](https://www.pebbletec.com).

Finish Shown on Cover: PebbleTec, Tropical Breeze



■ Which of the following project features are of interest to you?

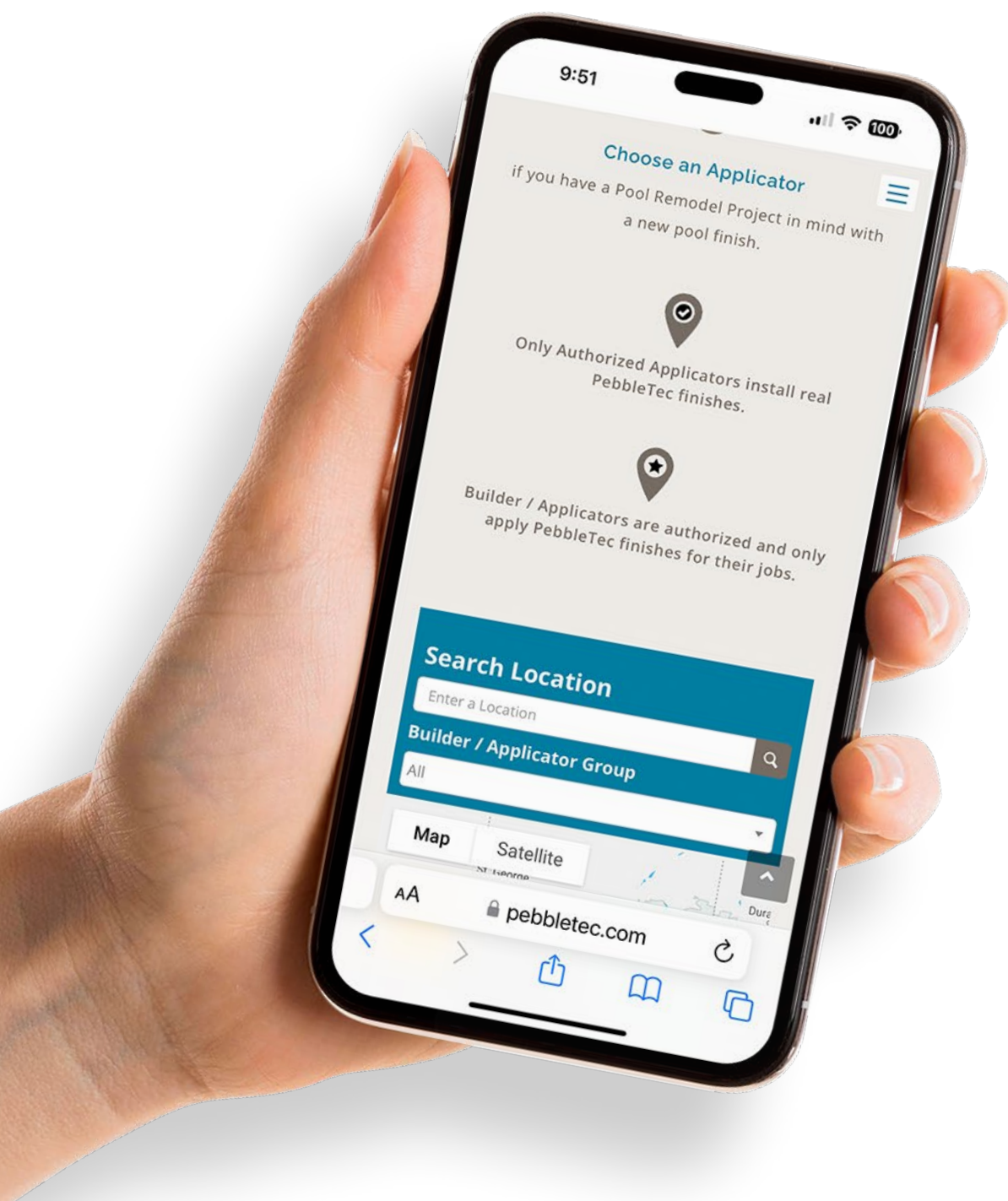
- A** New pool finish and updated waterline tile (“Waterline tile” is the rim of tile around the pool near the water’s surface. In a remodel project, the pool finish and waterline tile are usually completed at the same time.)
- B** New coping (“Coping” is the concrete or stone surface surrounding the pool, where the pool structure meets the deck.)
- C** New decking or pavers
- D** Fire & Water features, including Fire/Water bowls, scuppers, planters, fire pits and more
- E** Fences, screens or railings for safety, privacy or general decor
- F** Structural pool changes (New steps, spas, grottos, slides etc.)
- G** New in-pool lighting and equipment
- H** Added In-pool seating or tables
- I** Landscaping

Finish Shown Above: PebbleSheen, Ocean Blue

3. Choose Your Project Partner

To be sure your pool project is done right the first time, it's important to choose a highly qualified, vetted pool builder or installer.

- If you ONLY need items A and B from the previous page, you probably need an **installer**. Visit **PebbleTec.com** to find an Authorized Installer near you. Only these experts are qualified to sell and install real PebbleTec finishes, offering a warranty on workmanship that matches PebbleTec's industry-leading product warranty.



- If you need any of the other items from the previous page, (C through I), you will likely need a pool **builder**. These select experts in your area are also listed on **PebbleTec.com**.
- Make an appointment with your installer or builder, who will usually visit your home to speak with you about your project vision and budget.

4. Make Pool Design and Material Decisions

- Choose your pool water color. (Visit pebbletec.com/inspiration/watercolor for ideas and choices!)
 - ▶ Select your pool finish texture.
 - ▶ Choose a waterline tile.
 - ▶ Select coping, then decking and pavers, to complement your pool and your backyard.
 - ▶ Consider adding Fire & Water features for added beauty and ambiance.
 - ▶ Choose in-pool seating, as well as slides, grottos, railings, screens, kitchenettes and other enhancements. (Your Builder will coach you through the material options.)

5. Build and Start-Up Your Pool

- A pool project can require 1 week and much longer, depending on the project scope. (Ask your installer or builder to confirm timing and process steps.)
- Check out videos like this one to view an actual pool installation: pebbletec.com/process/#installation
- The first 28 days of your pool's start up are critical. For the first 7 days after filling with water, the pool must be brushed 3 times/day. For the next 3 weeks, brush the pool twice daily. (Ask your installer or builder about this; and visit pebbletec.com/customer-support/pool-care-instructions for more start-up and care instructions.)
- Do not enter your pool until it is filled with water – AND until pool equipment is running and pool chemistry is fully balanced.

6. Register Your Pool Finish and Maintain Proper Pool Chemistry

- Be sure to register your PebbleTec pool finish right after installation and learn about our product warranty: pebbletec.com/customer-support/product-registration
- Commit to maintaining optimal pool chemistry to ensure your new pool finish will last and last. See all care instructions shown at: pebbletec.com/customer-support/pool-care-instructions

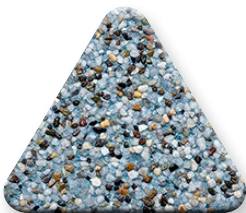
Find Your Ideal Finish Texture & Water Color

When it comes to choosing a finish texture and water color, we know that everyone has their own ideals in mind. That’s why we offer **six finish textures** and over **60 colors**. View pool photos for each finish in our Pool Scape Design Tool at: pebbletec.com/inspiration



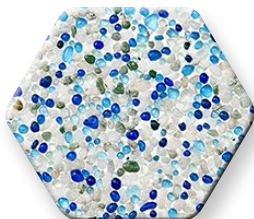

PebbleTec®
The Original

Natural look and feel



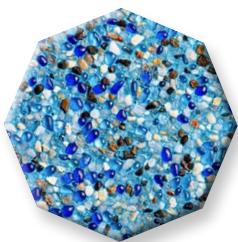

PebbleSheen®
Refined Textured Finish

Refined texture / natural look




PebbleBrilliance®
Elegant Infused Finish

Refined texture with smooth




PebbleEssence™
Radiant Textured Finish

Refined texture with more sparkle




PebbleFina®
Enduring Smooth Finish

Smoother texture




PebbleBreeze™
Luxurious Polished Finish

Ultra-smooth polished texture

Why PebbleTec? For our long-standing reputation of beauty, durability and outstanding customer support



Since 1987, Pebble Technology International has been a driving force in the transformation of the pool building and remodeling industry. PebbleTec maintains its leading position with an unwavering dedication to product beauty and durability, as well as outstanding customer support.* We work only with select builders and PebbleTec Authorized Applicators, and we never compromise on quality. With over 30 years of this kind of history, it is no surprise that the brand is recognized by so many.

**Source: Stax Consumer Study, 2021*



*The World’s Most Trusted
Pool Finishes®*

Make Your Backyard a Resort Destination

Fire & Water products are designed to match the quality and luxury of our pool finishes. Choose from our premium selection of products, including artisan cast stone and hammered copper bowls, fire pits, scuppers and more. With PebbleTec products, you can create the outdoor space of your dreams.



Photo: Artisan Cast Stone Square Fire Bowl, Natural Finish – Mossrock

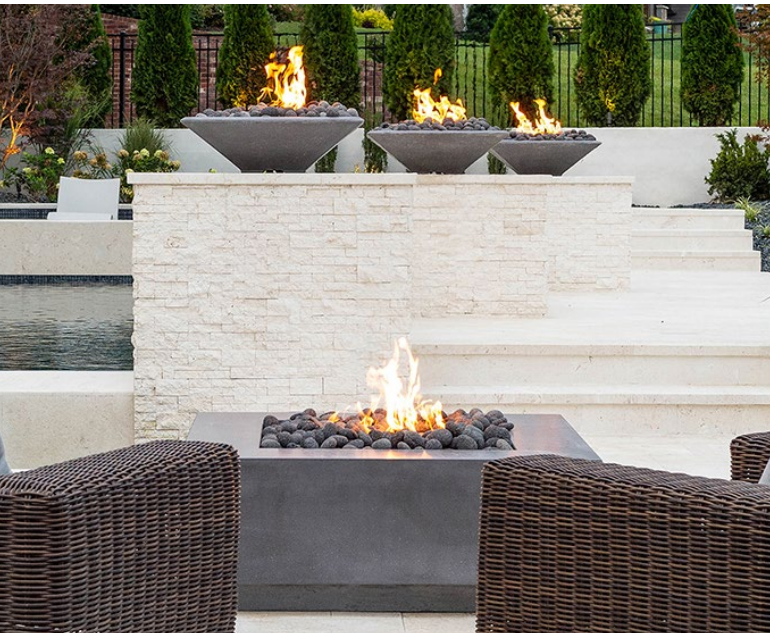
View all your design options at:
pebbletec.com/products/fire-water-elements



Hammered Copper Square Fire and Water Bowls



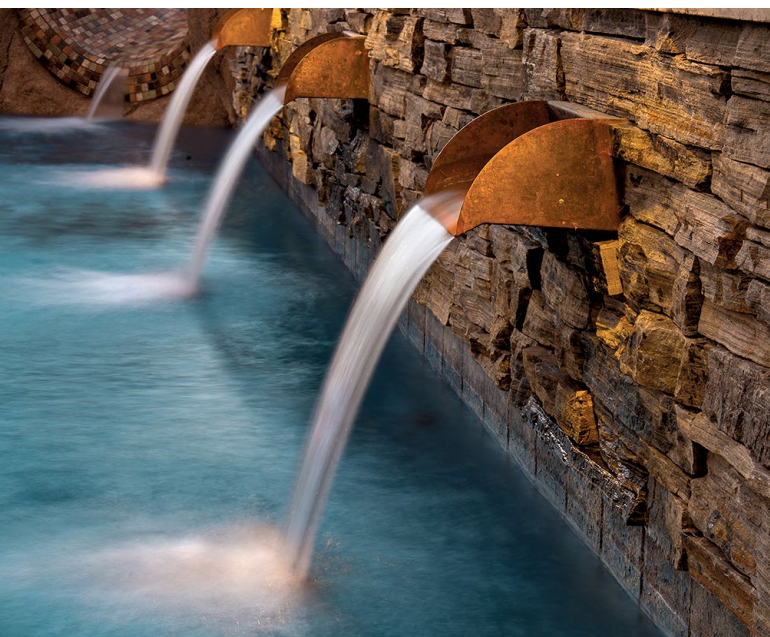
Cast Stone Fire Pit, Natural Finish – Mossrock



Cast Stone Square Fire Pit and Fire Bowls, Honed Finish – Slate



Cast Stone Square Fire & Water Bowl, Honed Finish – Carrara



Copper Scuppers – Chute Flow



Stainless Steel Scupper – Sheet Flow

Pebble Technology[®]

INTERNATIONAL

*The World's Most Trusted
Pool Finishes[®]*

US Headquarters

8435 N. 90th St., Suite 6
Scottsdale, AZ 85258
800.937.5058

Connect with us at
pebbletec.com.



Water color and finish samples displayed in print and digital photography may differ from actual results due to factors including, but not limited to, printing processes, lighting conditions, surrounding deck material, landscaping and pool depth, as well as expected variation with the use of natural stone products. © 2022 Pebble Technology International. LIT_046_08.23