

SCUPPERS

INSTALLATION, MAINTENANCE & WARRANTY GUIDELINES

INSTALLATION

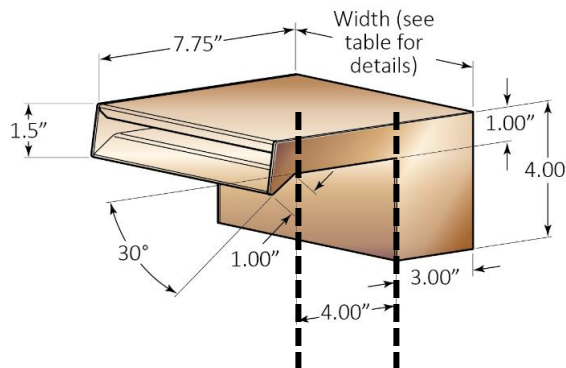
The Fire + Water Elements copper scuppers by Pebble Technology International (PTI) are designed for variable flow application – 10 GPM to 30 GPM per linear foot. For scuppers 36" and over, the variable flow application is 15-40 GPM per liner foot. Copper scuppers can be used with variable and single speed pump systems with adjustable flow control valves.

Technical specifications:

- This installation guideline is intended for use with all the copper scuppers listed below
- See each diagram for recommended mounting ranges

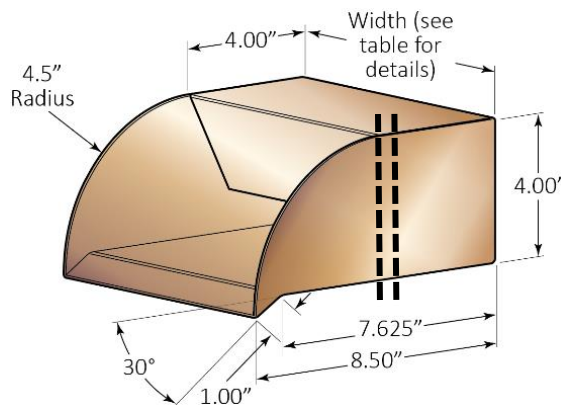
Sheet Flow:

Width	Part Number
8"	FAW-SF008
12"	FAW-SF012
16"	FAW-SF016
24"	FAW-SF024
36"	FAW-SF036
48"	FAW-SF048



Trough Flow:

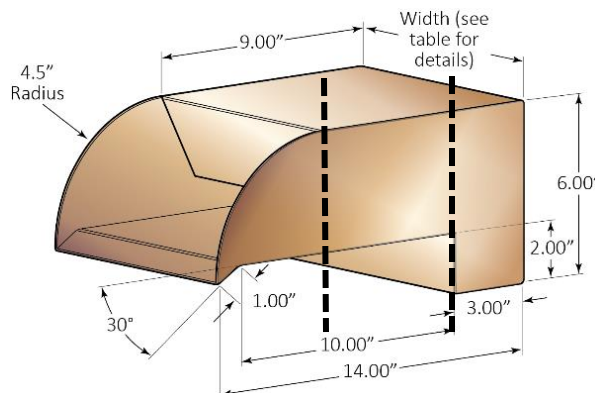
Width	Part Number
6"	FAW-TF006
8"	FAW-TF008
12"	FAW-TF012
16"	FAW-TF016
24"	FAW-TF024
36"	FAW-TF036
48"	FAW-TF048



The scupper can be mounted such that the wall face can be positioned anywhere between the bold, dashed lines.

Chute Flow:

Width	Part Number
6"	FAW-CF006
8"	FAW-CF008
12"	FAW-CF012

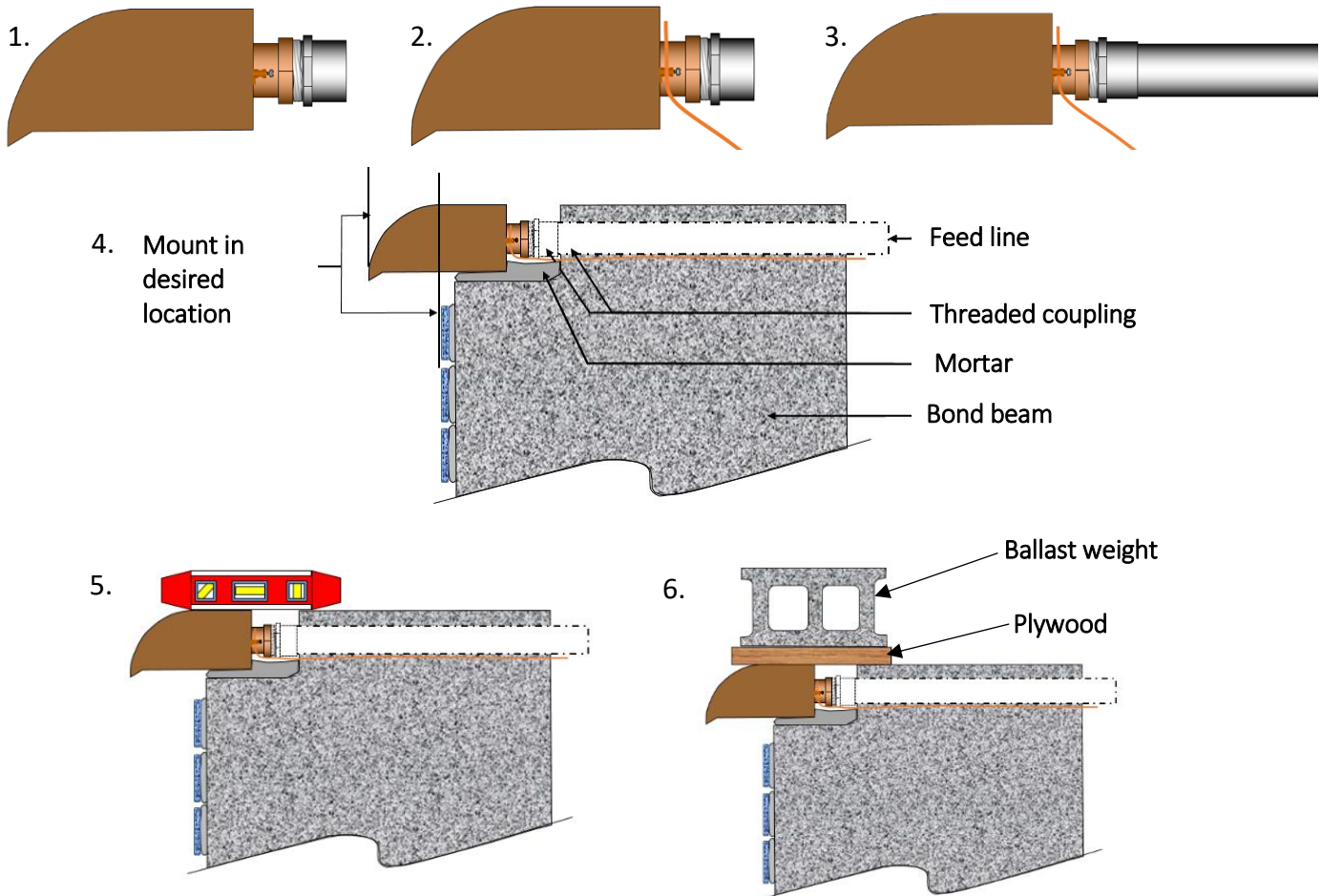


Items needed:

- Teflon pipe tape
- 14 or 16 AWG copper ground wire
- Schedule 40 – 1 ½" PVC pipe (*in your required length*)
- Schedule 40-1.5" male threaded coupling (units over 24" may have multiple inlets)

Connect, level and set:

1. Use Teflon pipe tape and connect a Schedule 40 - 1 ½" PVC male threaded coupling to the 1.5" female NPT copper threaded fitting on the scupper. BE SURE CONNECTION IS SEALED AND DOES NOT LEAK – the PTI warranty does not cover plumbing leaks resulting from faulty installation.
2. Connect the 14 or 16 AWG copper ground wire to the bonding lug on the back of the scupper unit.
3. Glue a schedule 40- 1 ½" PVC pipe to threaded coupling.
 - Units over 24" may have multiple inlets. The proper manifold should be constructed out of Schedule 40 PVC to help proportion flow across the inlets.
4. Set mortar on the back and bottom only of the scupper. Mount the scupper in the final desired position relative to the finish wall face.
5. Level scupper in all axis.
6. Secure scupper in position while mortar dries by covering it with plywood and a ballast weight.



OPERATION & SAFETY

- Before any inspection of the unit, always turn off the water supply at the pool pump controls.
- The scupper should be inspected and cleaned before initial use and seasonally by a qualified service professional. More frequent cleaning may be required as necessary, depending on environmental conditions.
- Do not handle the scupper or use to support body weight. Copper is a soft metal that can bend and break easily.
- Corners and edges are sharp. Use caution when near the scupper. Do not put hands and fingers inside the scupper opening, they can become trapped.
- PTI scuppers are designed to be used at various flow rates ranging from 10-30 GPM per linear foot. For scuppers over 36", the variable flow application is 15 GPM to 40 GPM per liner foot.
- Windy conditions can affect the water sheet as it cascades into the pool.
- If any problems occur, or for technical support, first contact your pool builder or installer.

GENERAL CARE AND MAINTENANCE

Fire + Water Elements copper features are made with a high quality polished finish. It is the natural process for copper exposed to the elements or pool chemicals to patina due to oxidation. The copper may turn brown, green, blue or even purple. This natural process will continue to change over time. If you desire to keep the original copper appearance, you can do so by following the copper cleaning instructions below.

Items needed:

- Soft bristle brush
- Scotch-Brite® pad
- Dish soap
- Solution of 8 oz. of white vinegar, 2 tsp of salt, and 1 oz. of lemon juice
- Buckets for cleaning solutions
- Water hose
- A multi-surface wax protectant (spray version)
- Clean soft cloth; use clean microfiber or soft lint free rags

Cleaning instructions:

1. To clean light patina stains mix dish soap cleaning solution with water. Use a rag with solution to wipe away light patina and excess dirt from the polished copper surface.
2. To remove stains and heavier patina, mix a solution of 8 oz. of white vinegar, 2 tsp of salt and 1 oz. of lemon juice in a mixing bucket. Apply the cleaning solution to the surface using a rag. Allow 1-3 minutes to let the solution penetrate the copper. If stains persist, increase concentration of solution by adding more salt and lemon juice.
3. Wipe off the cleaning solution.
4. Use a soft bristled brush or a fine Scotch-Brite® pad to clean the patina from the polished copper surface. Start with very light pressure and work in a circular motion. (It is ok for the polishing utensil to be wetted with cleaning solution).
5. Wipe the polished copper surface with a clean dry rag. With a clean wet rag immediately wipe and rinse any remaining cleaning solution from the polished copper surface. Be careful not to allow dirty water to run down the wall, into the pool or on the deck. Take necessary precautions to minimize the amount of run-off water that may stain or damage any nearby materials.
6. Wipe dry and allow the surface to dry.
7. Spray the polished copper surface slightly with the multi-surface wax and wipe off immediately with a cloth. Do not allow the surface wax to dry before wiping.
8. Repeat all steps as needed to maintain the desired look of the polished copper surface.

SEASONAL CARE

Seasonal shut down of the Fire + Water Elements product is recommended if there is a period of the year you do not use your features, or if you live in an area where dust, the wind, snow or freezing conditions occur. In cold climates, you may need to cover the features to prevent damage from ice and snow. Additionally, summer storms can deposit dust and debris on the functional surfaces. Always clean out the features before use to prevent any debris from affecting the functionality of the system. Make sure water valves leading to water features are off or the pump system is disabled. Please contact your pool care professional for assistance if needed.

WARRANTY CLAIM PROCESS

Installation Warranty

Defects in workmanship relating to the installation or plumbing of your scupper are managed by the pool builder or installer of your scupper. All claims related to installation workmanship and installation materials should be submitted directly to the builder or installer.

If you purchased your scupper through a pool builder and do not know who installed your scupper, please submit the warranty claim to your pool builder.

Scupper Warranty

All warranty claims for defective scuppers must be submitted to PTI in writing by the builder or homeowner and must specify the defects present in the scupper.

PTI must be given an opportunity to evaluate the warranty claim. If it is confirmed the defect is in the scupper, PTI will, at our discretion, coordinate the repair or replacement of the defective scupper via the builder or installer. PTI warrants only the scupper and is not responsible for labor and other costs associated with removal and reinstallation.

Contact Us

Pebble Technology International
15540 N. 77th Street
Scottsdale, Arizona 85260
480.948.5058
warranty@pebbletec.com

Fire + Water Elements – Product Warranty

1-Year Limited Residential Warranty

Pebble Technology International® (PTI) will attempt to repair any unit, when used as intended, which has proven to be defective in workmanship or material, preventing the proper operation of the unit when reported within one year of the date of purchase. This warranty does not cover any costs related to removal or replacement of the unit. For warranty consideration, contact the original dealer and provide proof of purchase, date of purchase, and the date of installation. The dealer will contact PTI to obtain instructions regarding the warranty request. If the unit is deemed defective and cannot be repaired, PTI will replace it with a new or refurbished unit. This warranty applies only to residential use of the unit. The customer is responsible for shipping costs, which may be reimbursed by PTI should the unit be deemed defective.

IF NECESSARY, THE UNIT MUST BE REMOVED AND REPLACED ONLY BY A LICENSED PROFESSIONAL IN THE PLUMBING AND/OR ELECTRICAL TRADE. DO NOT ATTEMPT TO REMOVE AND REPLACE THE UNIT YOURSELF.

PTI will not be responsible for any asserted defect, which has resulted from accidents, over-heating, freeze/thaw, misuse, abuse, repair or alteration. Under no circumstances, will PTI be liable for incidental or consequential damage resulting from defective units, improper installation, or improper removal. PTI is not responsible for any injury or mishap related to misuse, abuse or lack of judgment in choosing fire display locations.

Cementitious Based Components: Non-structural hairline cracks are considered an inherent part of any cementitious product, not a manufacturing defect. Hairline cracks can occur at any time during the life of the product due to temperature changes and expansion and contraction of concrete. Hairline cracks are defined as cracks that do not threaten the integrity or stability of the product, nor prevent the continued and normal use of the product. These hairline cracks are not covered by the warranty.

Calcium buildup and efflorescence are naturally occurring byproducts that are deposited on the surface of cementitious products. These can usually be cleaned and are typically harmless to the cementitious structure, only presenting a cosmetic issue. The effects of these surface deposits are not covered by the warranty.

Metallic Based Components: Improper chemical balance of pool water may cause corrosive conditions to metal water features. PTI will not warrant products exposed to such conditions. Additionally, finishes offered such as powder coating are affected by factors like UV exposure and pool water chemistry and are therefore not encompassed by this warranty. Some components (such as brass fittings) may need to be replaced over time, as they will degrade when in contact with a dissimilar metal (copper). This circumstance is naturally occurring and is therefore not covered by the warranty. These components are designed to be replaced and this design feature helps to preserve the life and integrity of the copper.

Terms and Conditions: This warranty does not apply to any damages caused by: (1) any failure resulting from unreasonable use or abuse, (2) unsatisfactory material choices by you or the installer, and (3) accidental damage or element damage such as water or rain. PTI is not responsible for the application of local codes and/or if the unit is not approved for installation. Please check with your local building department or governing agencies for prior approval before purchasing. PTI is not responsible for the actions and omissions, including negligence, of the installer. Installation workmanship and any materials used in installation are not covered under this warranty. Variations in handmade products are normal and not to be considered a warrantable issue. PTI will not warranty fire products in which a burner unit purchased from another supplier has caused damage.

This warranty, as most currently published at <https://www.pebbletec.com/customer-support/warranty-information/> is your sole warranty and sets forth your exclusive remedy, with respect to a defective fire and water feature. All other warranties, expressed or implied, whether of merchantability, fitness for purpose or otherwise, are expressly disclaimed by PTI. PTI reserves the right to make changes to the warranty program.